



COAST & COUNTRY

**rivergum**  
homes

DISPLAY VILLAGE | VICTOR HARBOR

# Rivergum Homes' Coast & Country Range sets a new benchmark in stylish, functional homes that deliver quality, flexibility, innovation and unmatched value for money.

From the brilliant white sands of an ocean beach to the whisper of the wind through towering eucalypts, Rivergum Homes' Coast & Country Range has the perfect home to capture the very best of your surroundings and make the most of scenic views.

By drawing on the latest ideas and innovations – both locally and from abroad – our team of specialist designers have carefully shaped each home to meet the needs of a modern, changing lifestyle, ensuring it will always be in tune with how we want to live today and in the future.

The collection of single and double storey homes includes options that can be built in-place or transported to site – opening up a host of opportunities for making the most of every allotment, even where site access or land profile may be challenging.

Leading the way in advanced construction design and technologies, the Coast & Country Range epitomises Rivergum Homes' dedication to offering quality, comfort, livability and value: cementing its position as one of Australia's most progressive builders.



# THE pavilion DESIGN STUDIO

Personalising the look and feel of your home with your own unique style is one of the most exciting aspects of building.

The Pavilion at Mile End is Rivergum Homes' exclusive design studio and is one of the largest selection centres in Australia. Here, you'll find an extensive range of products, including the latest design trends and innovations, all on display.

Our interior design consultants will make an appointment to personally guide you through the selection process and answer any design or décor questions you might have.

If you are dreaming of a new home, we welcome you to visit for inspiration even before you build.

## **The Pavilion Design Studio**

387-391 South Road, Mile End South

Open Monday - Friday 9am – 5pm

and Saturday 10am – 4pm





# LOTUS



## CONTEMPORARY

A modern, elevated design to perfectly capture the breathtaking views and refreshing breezes.

The Lotus design offers spacious living areas and oversized windows to bring the outdoors in. Sliding doors open to the balcony for morning brunch and evening entertaining. This retreat-style home comes with the option of a clever pole frame design to raise your home even higher and take advantage of views whilst adding valuable storage below.

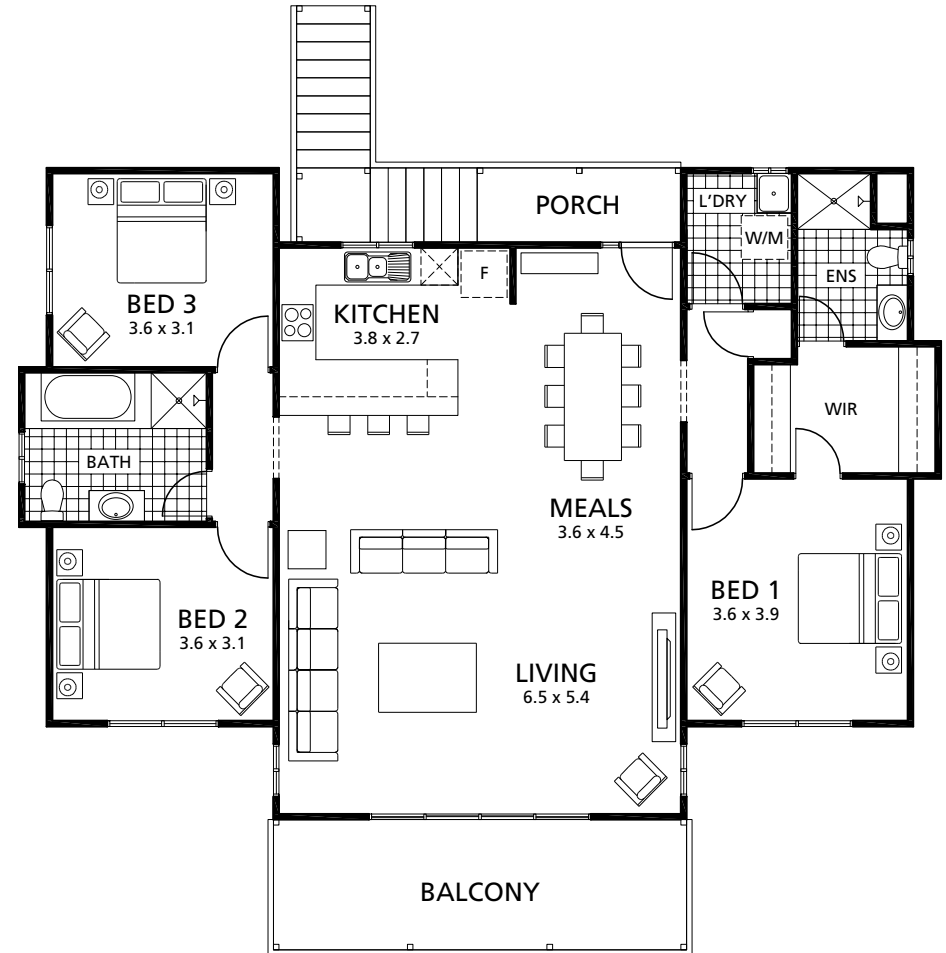


WIDTH 14.85M DEPTH 12.60M

AREA	MEASUREMENT (M <sup>2</sup> )
LIVING	131.29
PORCH	3.98
BALCONY	14.11
TOTAL AREA	149.38

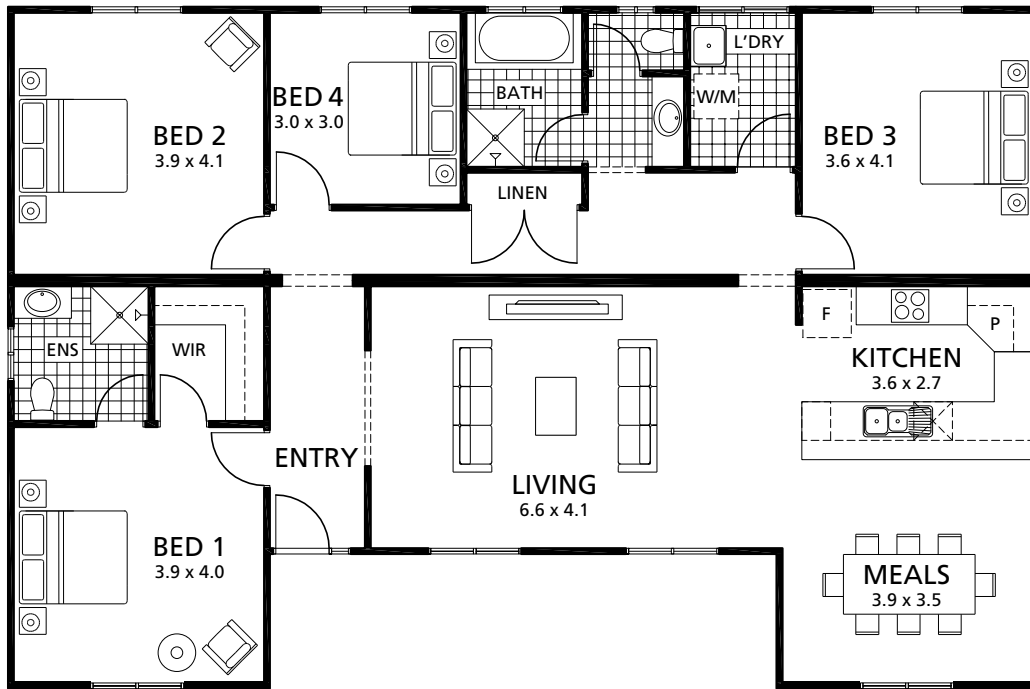


## TRADITIONAL



Standard Traditional façade floorplan shown.

# EDEN



Standard Traditional façade floorplan shown.



CLASSIC

A charming, classic design, which exemplifies the Coast & Country collection.

Behind the attractive, double-fronted façade, the large open plan living, dining and kitchen provide a relaxed atmosphere for entertaining, while four spacious bedrooms mean everyone can stay over, with plenty of space to play.



TRADITIONAL



WIDTH 16.05M DEPTH 10.62M

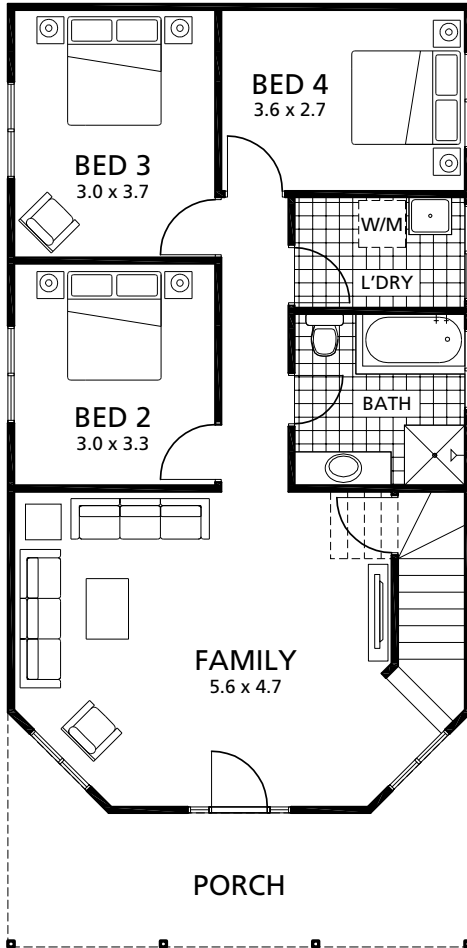
AREA	MEASUREMENT (M <sup>2</sup> )
LIVING	153.84
TOTAL AREA	153.84





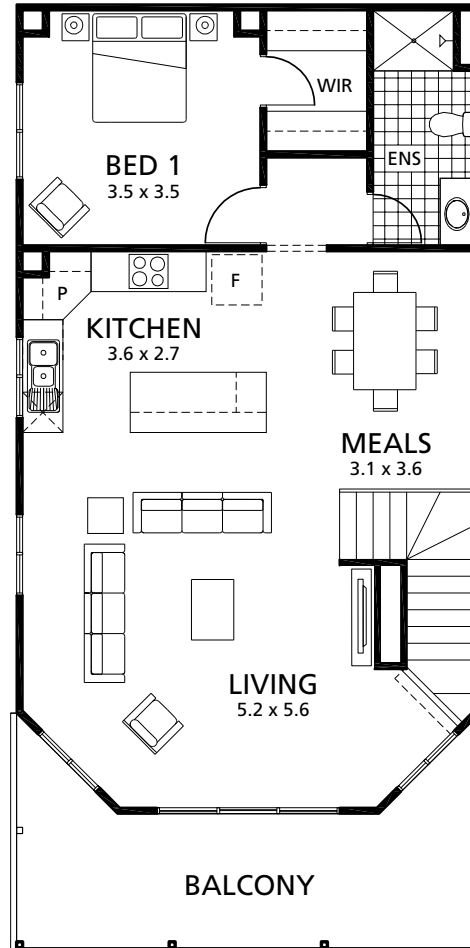
# ASPEN

Ground Floor



Standard Traditional façade floorplan shown.

Upper Floor



TRADITIONAL (MODIFIED)

The ideal home to relax on the balcony and take in your impressive surrounds.

Light filled, spacious living areas are key in the Aspen with an impressive grand family room downstairs and equally striking open-plan living and kitchen upstairs, each positioned at the front of the home to capitalise on vast 180-degree coastal or country views.



WIDTH 6.90M DEPTH 14.06M

AREA	MEASUREMENT (M <sup>2</sup> )
LIVING GROUND	80.96
LIVING UPPER	80.96
PORCH	16.05
BALCONY	16.05
TOTAL AREA	194.02



## COAST & COUNTRY DISPLAY VILLAGES

### HACKHAM

120 Main South Road  
(enter via Gates Road),  
Hackham

#### Opening Hours:

Open 11am - 5pm,  
7 days

### PARAFIELD

Main North Road,  
(enter via Freda Thompson  
Place), Parafield

#### Opening Hours:

Open 11am - 5pm,  
7 days

### VICTOR HARBOR

8-18 Hindmarsh Road,  
Victor Harbor

#### Opening Hours:

Open 11am - 5pm daily,  
except Mon 12.30pm - 5pm

387 - 391 South Road  
Mile End South  
South Australia 5031  
PO Box 191, Torrensville  
South Australia 5031

**T** (08) 8354 7800 **F** (08) 8351 7703  
**E** [rivergum@rivergumhomes.com.au](mailto:rivergum@rivergumhomes.com.au)

**[rivergumhomes.com.au](http://rivergumhomes.com.au)**  
**freecall 1800 675 706**

**rivergum**  
homes

© 2016 Rivergum Homes Pty Ltd. All plans are copyright. All prices are GST inclusive. Prices and specifications accurate at the time of printing and subject to change without notice. All photos, illustrations and plans represented are for illustration purposes only. Some display homes feature specification upgrades and design alterations which are not included in the base price. Rivergum Homes reserves the right to alter and change designs without notice. This pricing is based on the client providing a cleared, level or cut building platform prior to construction and within 50 km of Adelaide GPO (100 km for Transportable). Bush fire, energy efficiency assessments and ocean corrosion protection costs will be forwarded to the client after individual assessment. Fixed price footings does not allow for special planning requirements and rock digging or collapsible soils. For build time guarantee refer to [www.rivergumhomes.com.au/promotions/build-time-guarantee](http://www.rivergumhomes.com.au/promotions/build-time-guarantee). Conditions apply. E&OE. SA Builder's Licence GL113681. ABN 70 065 466 337. Effective from 5th October 2016.